

Product Introduction

Contents



1. Company Introduction

2. About Nexacro N



1. Company Introduction

The leading IT Dev't Company

The UI/UX Expert

TOBESOFT was established in the year 2000 as a leading IT development platform company and is the 'first company to be listed on the KOSDAQ' in the industry.

With over 20 years of accumulated technical expertise and customer experience,

We have released top-ranking UI/UX solution platforms such as 'Nexacro N', 'Nexacro Platform', 'X Platform', and possess approximately 7,000 domestic and international reference cases.

Through research and development innovative technologies that integrates new technologies such as AI, we create value for our customers.

We will continue to challenge ourselves with technological innovations.



Company Name TOBESOFT CO., LTD.

Established On July 01. 2000

CEO Kyeongchan Lee

Capital 34 billion won (as of 2022)

Annual Sales 43 billion won (as of 2022)

Business Area SW dev't, supply, maintenance

Headquarter Intops Building, 617
Bongeunsa-ro, Gangnam-gu, Seoul

Website www.tobesoft.com

Contact No. 02-2140-7700



No.1

Business Platform
Biggest Market Occupancy
2021



KOSDAQ

Listed Company



Global

Company
US/Japan/China



86%

86% of Largest
Companies in Korea
are Clients



6,000

Completed
Projects

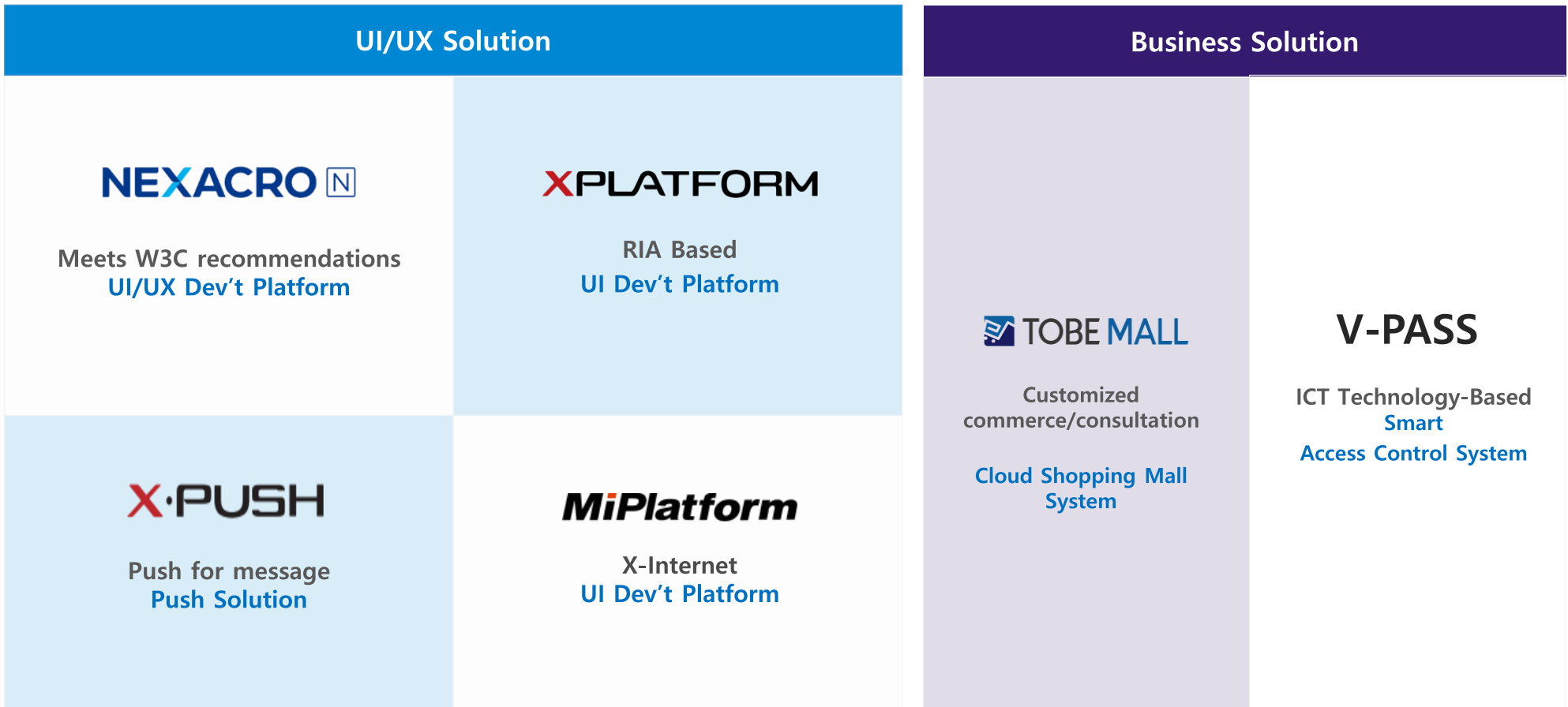


2,000

Annual Number
of Trainees



As a leading software company in Korea, TOBESOFT provides optimized UX business experience through its diverse UI/UX and business solutions



2. About Nexacro N



The optimized UI · UX solution for int'l web standard



NEXACRO N is UI development software that enables users to easily create diverse user interface in accordance with global web standards such as HTML5 / ECMAScript / CSS

**Web
Standard**

**High
Performance**

**Dynamic
Design**

Multi OS, Multi Browser, Multi Device support	WYSIWYG-type integrated UI development tool	Various effects such as themes, CSS, template
Web standards-compliant (HTML/CSS/Script)	Separate UI and data for minimized data traffic	Convenient responsive web development
With web accessibility functions	Optimal communication and compression types	Intuitive design environment

Nexacro N enhances productivity, work efficiency, and the overall system within a business entity. We provide the best solutions to companies that need system improvement.



Nexacro N is the only and the best solution to meet the changes in the complicated ICT environment and the needs in the market

| Multi - OS & Device |



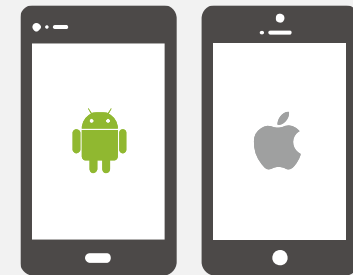
- Supports multi - OS/device/web browser
- No-download product
- Operates on commercial web browsers (Chrome, Firefox, etc.)

| Desktop |



- Quick and enhanced operation environment
- Customized UI setting (monitoring screen, sales status, etc.) through widget

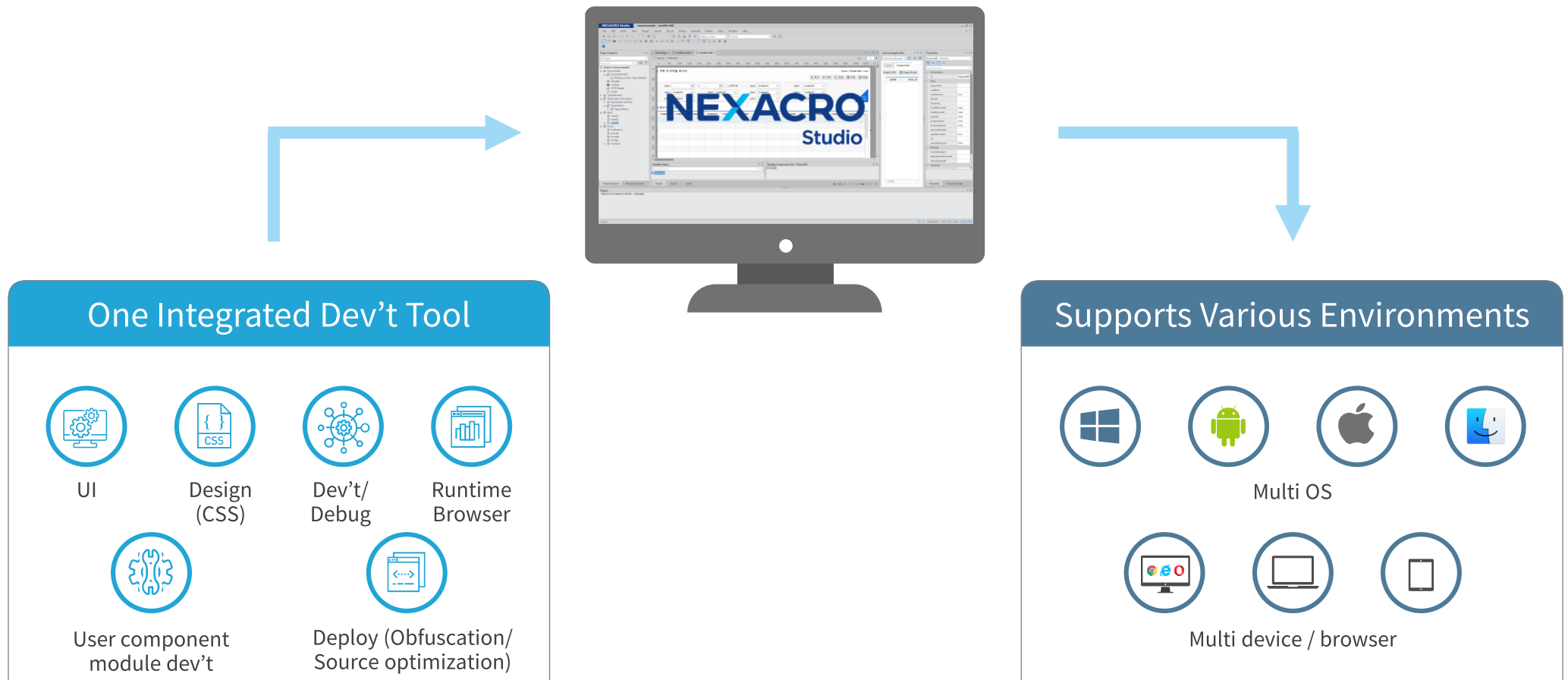
| Mobile |



- Supports hybrid app and web app
- Solved web view fragmentation issue through *NRE

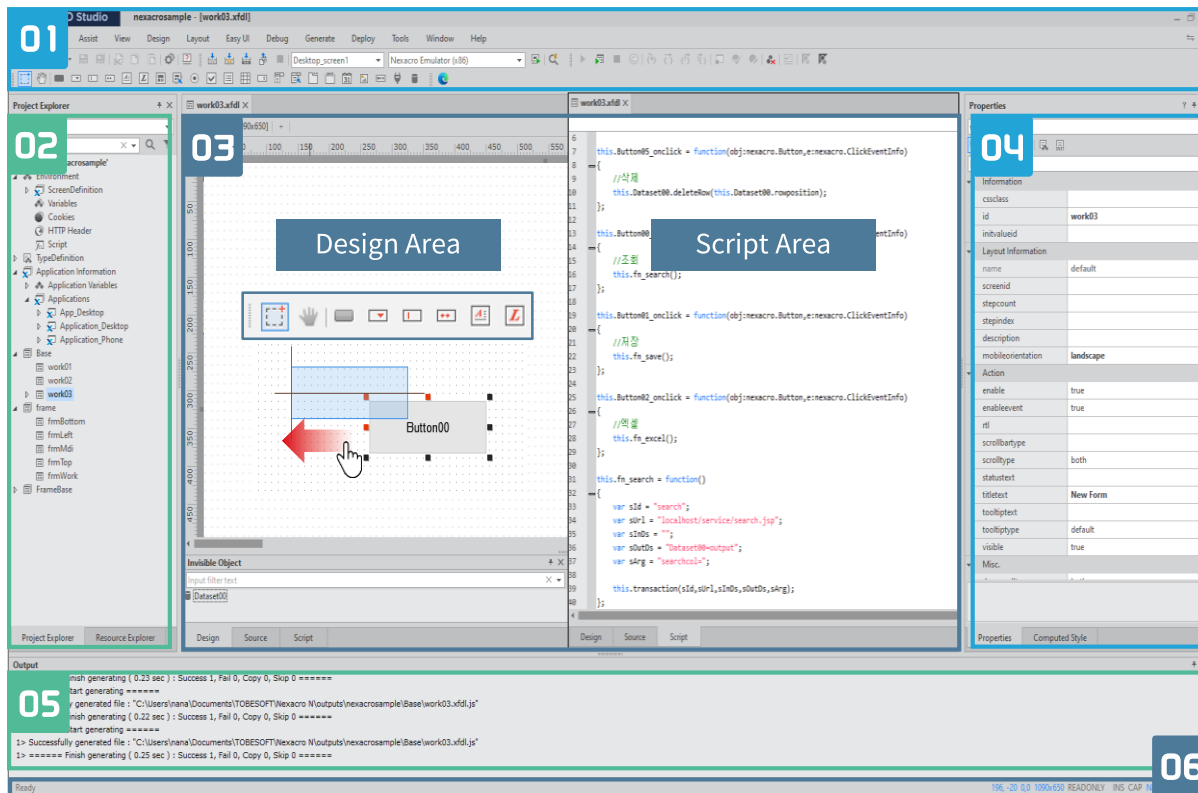
*NRE : Nexacro Runtime Environment

Nexacro provides integrated development and deployment environment for web applications and mobile APPs that supports different OS and devices.



Supports dedicated dev't tool “NEXACRO STUDIO”

Nexacro Studio provides WYSIWYG-type UI development tool. Drag to create your interface (UI) easy and quickly.

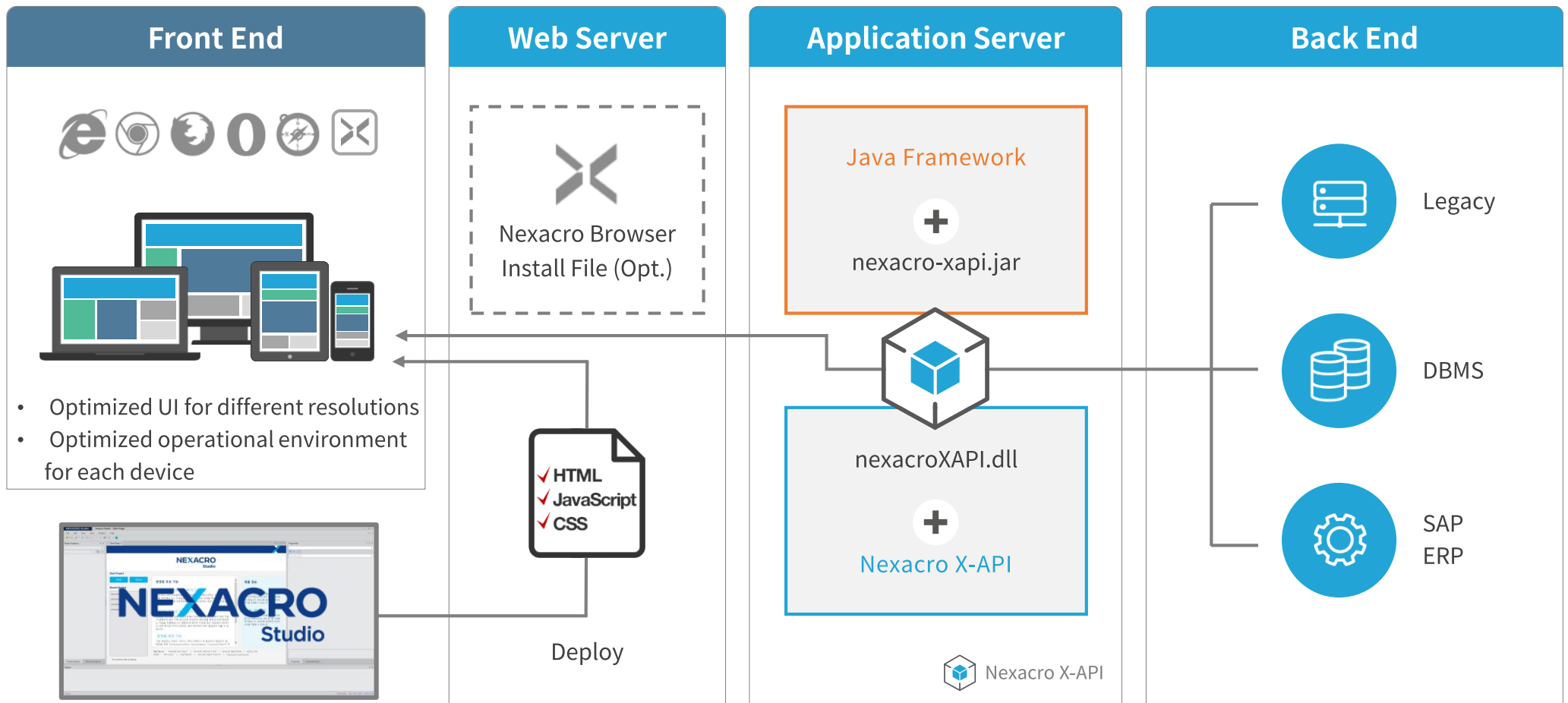


- 01 Tool bar for controlling menu, TextStyle, Alignment, Object, and others (general menu or ribbon interface)
- 02 Project Explorer / Resource Explorer
- 03 Edit design, source, and script
- 04 Display and edit forms, component, Dataset, property, and event
- 05 Display various messages and the results of “search”
- 06 Status bar that display the status of Nexacro Studio

※ WYSIWYG : what you see is what you get



Nexacro supports flexible system architecture. Nexacro N has multi-tier structure and it is compatible with any WAS and any DBMS.



<xtheme, xfdl, xad>

※ Nexacro X-API : Module for exchanging data between Nexacro application and server



Technological Support

24/7 Technological Support Website
and
Customer Call Center

- Patch per program, development tips, trial license
- More than **56,000 Q&A available**
- Answers **within 24 hours**
- **Weekday (09:00 ~ 18:00)/Weekend, Holidays (10:00 ~ 16:00)
Customer Call Center (1588-7895)**

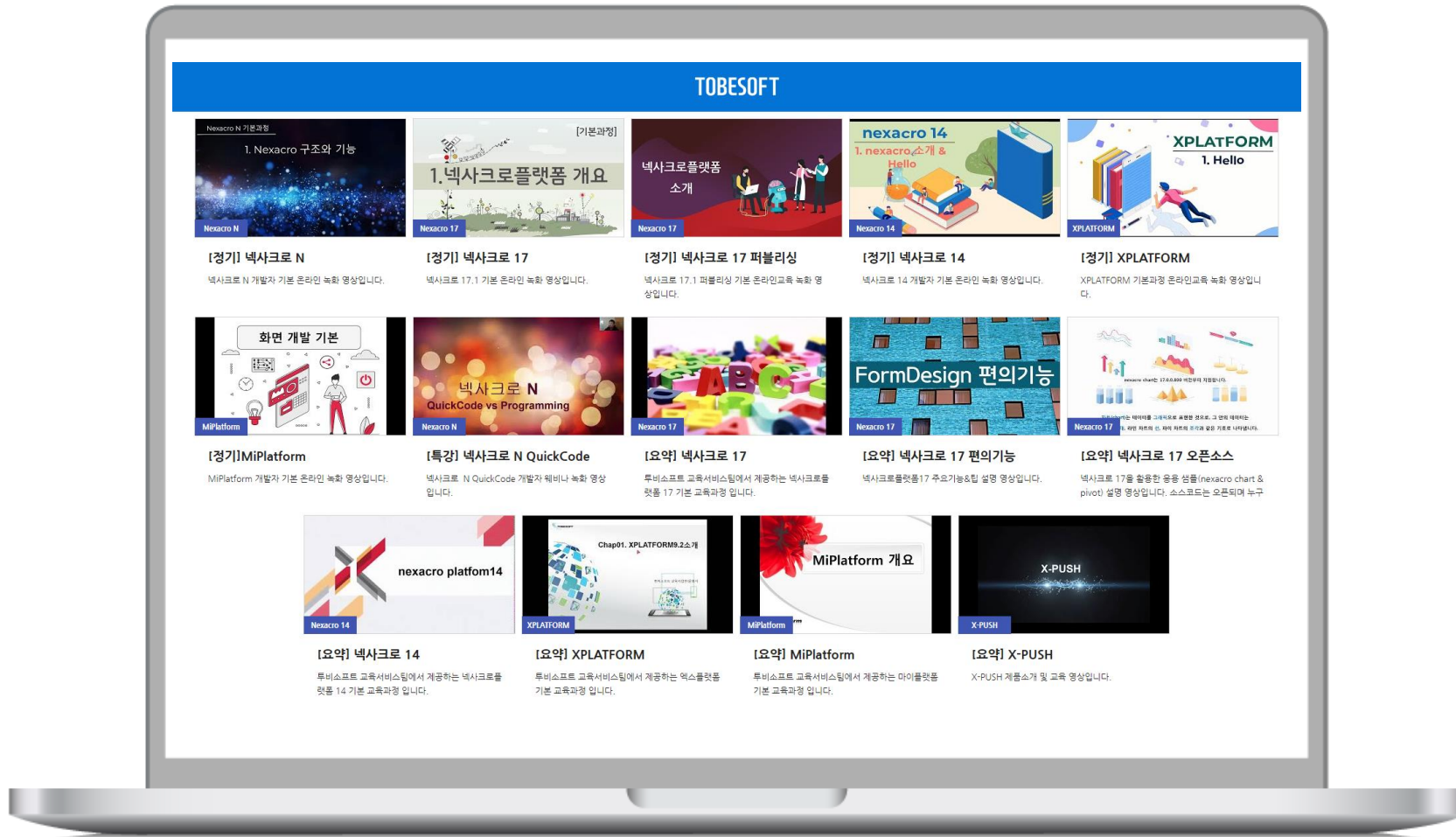


Expert Assistance

Online and Onsite Assistance

- For matters requiring visits, **our experts provides assistance online and onsite**

- ✓ edu.tobesoft.com/eduplay/
- ✓ support.tobesoft.com

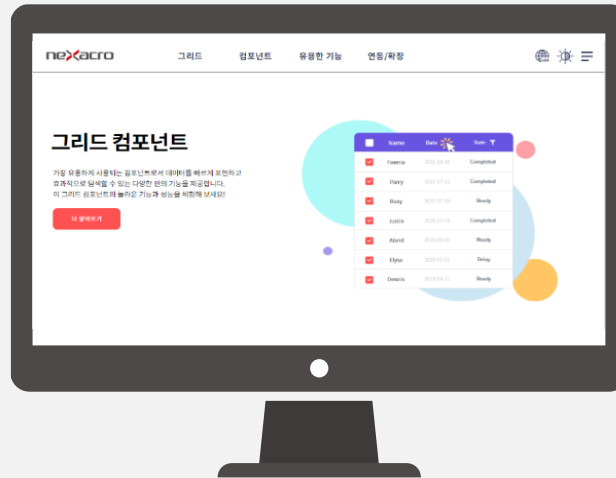


Documents



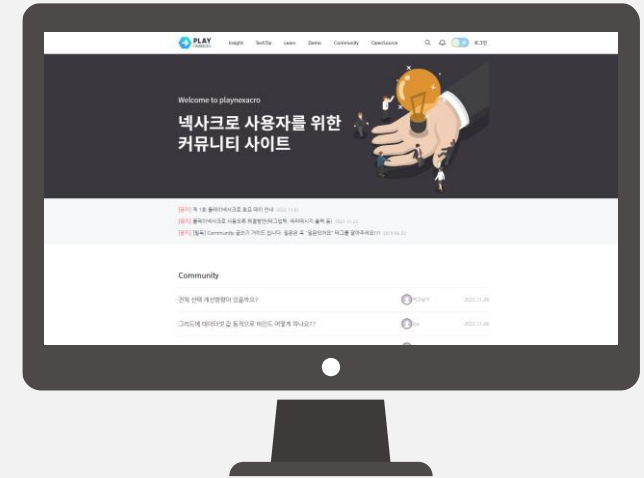
Provides detailed guidelines on product use
*English available

Trial Versions



Provides demo for products

Community



Operates developers' community with tips/open source/Q&A

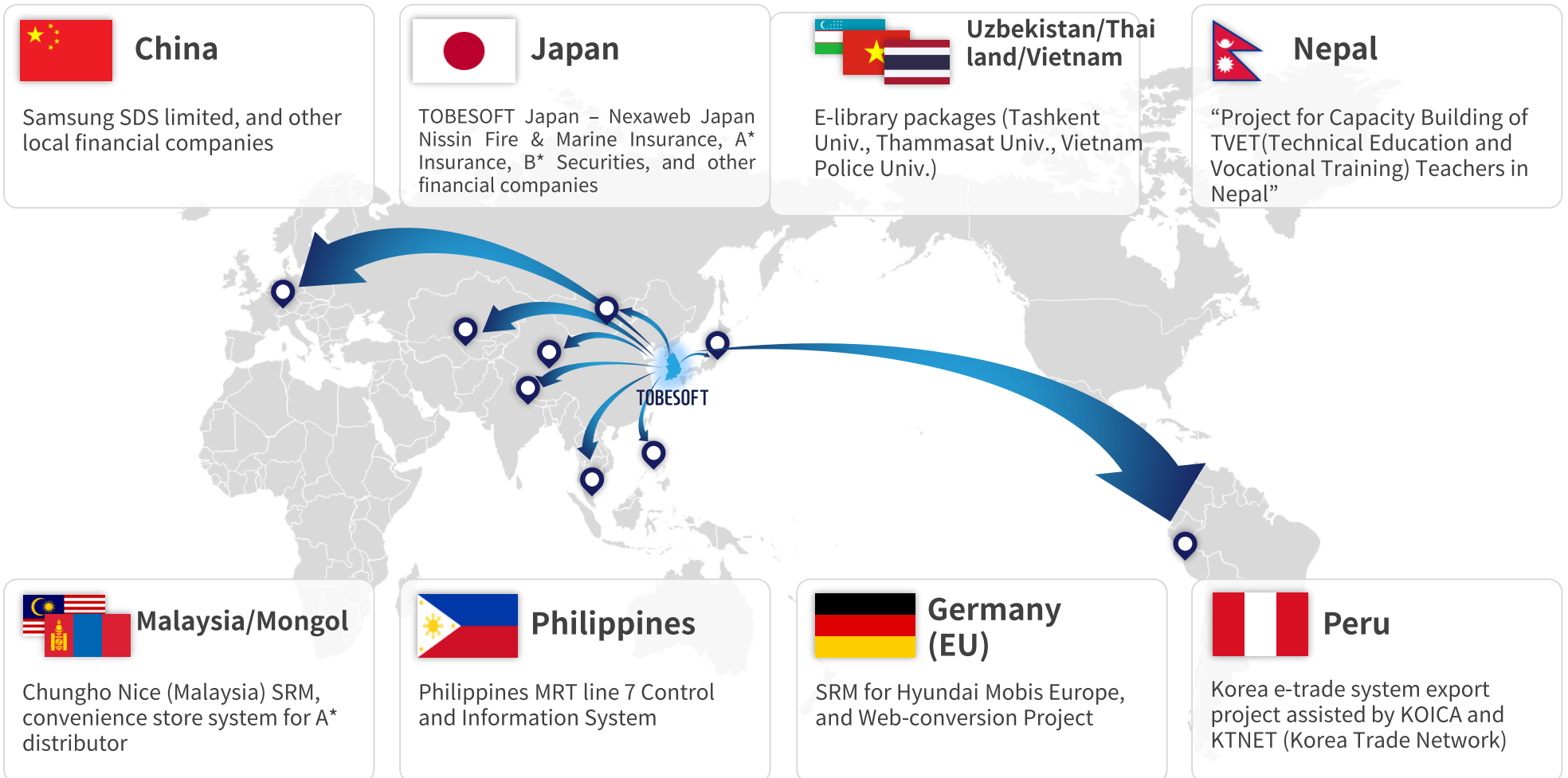
Clients of TOBESOFT

TOBESOFT accumulated over 17000 reference cases domestic and oversea.

Manufacturing						
Service						
Education						
Public						
Finance						
Overseas						

Nexacro N Overseas Cases

NEXACRO N is supplied worldwide. We are quickly expanding our market share abroad. NEXACRO N is the optimal UI/UX platform for your business.



Technology Competitiveness Analysis (Korea)

Category	NEXACRO N		eXbuilder6		WebSquare5	
No. of reference cases	<ul style="list-style-type: none"> 1,700 projects More than 5000 references including MiPlatform/XPLATFORM cases 	High	<ul style="list-style-type: none"> 40 projects About 100 including projects done by previous products 	Low	<ul style="list-style-type: none"> 337 projects About 467 including projects done by previous products 	Ave.
Base Technology	<ul style="list-style-type: none"> HTML and JavaScript 	High	<ul style="list-style-type: none"> HTML and JavaScript 	High	<ul style="list-style-type: none"> Converts XML source in WAS server Only supports Java (Server dependent) 	Ave.
Cross browsing	<ul style="list-style-type: none"> IE, Edge, Chrome, Safari, Firefox, Opera 	High	<ul style="list-style-type: none"> IE, Edge, Chrome, Safari, Firefox, Opera 	High	<ul style="list-style-type: none"> IE, Edge, Chrome, Safari, Firefox, Opera 	High
Source Code Security	<ul style="list-style-type: none"> Source obfuscation (Source compress and changing variables) Source compilation (Dedicated browser) 	High	<ul style="list-style-type: none"> Source obfuscation (Source compress and changing variables) 	High	<ul style="list-style-type: none"> The deploy file in in XML format. Source obfuscation is not possible 	Low
MDI Function	<ul style="list-style-type: none"> MDI function (C/S level) 	High	<ul style="list-style-type: none"> MDI button fixed on top and bottom Does not support window alignment 	Ave.	<ul style="list-style-type: none"> MDI button fixed on top and bottom Supports window alignment 	Ave.
Design Functions and Applications	<ul style="list-style-type: none"> Provides CSS editor in dev't tool Standardization is possible using the PreDefine function Automatically creates CSS file for each browse Provides easy interface for developers 	High	<ul style="list-style-type: none"> Supports CSS3 and WYSWYG editor Supports CSS LESS design method 	High	<ul style="list-style-type: none"> Unable to design the screen without a publisher (The design shown in the original source and the executed source is completely different) Old version FireFox 4.0 loaded as editor (CSS3 rendering not fully supported) 	Ave.
Provides Dedicated Browser	<ul style="list-style-type: none"> Provides a dedicated browser with C/S level functions and performance 	High	<ul style="list-style-type: none"> Not supported 	-	<ul style="list-style-type: none"> Provides separate product named W-Browser Open source Chromium browser 	-
Integration with External Modules	<ul style="list-style-type: none"> ActiveX extension for IE and dedicated browser. Direct integration into a dedicated viewer through DLL wrapping. Supports X-Agent solution for web-based device integration. 	High	<ul style="list-style-type: none"> Integrates with a separate product named eXDevice+ 	-	<ul style="list-style-type: none"> Integrates with a separated product named W-Gear Needs to register as service after installing user PC 	-
Mobile	<ul style="list-style-type: none"> Support for Web App and Hybrid App Providing over 20 different Device APIs Optimization support for various screen sizes per device Preview support through Screen Emulator 	High	<ul style="list-style-type: none"> Not supported 	-	<ul style="list-style-type: none"> Provides a separate product Open source based internally (Apache Cordova) 	-
Push	<ul style="list-style-type: none"> Provides X-Push (TOBESOFTW owned solution) 	High	<ul style="list-style-type: none"> Not supported (Integrates with a separate push solution) 	Low	<ul style="list-style-type: none"> Not supported (Integrates with a separate push solution) 	Low
Responsive Web	<ul style="list-style-type: none"> Quick and easy dev't using MLM (Multi Layout Management) Screen layout per page using STEP function 	High	<ul style="list-style-type: none"> Vertical/flow layout function 	High	<ul style="list-style-type: none"> Supports through Media Query No functions within the dev't tool 	High
Pivot	<ul style="list-style-type: none"> Provides proprietary pivot components Pivot configuration possible without coding using a dedicated editor Superior support for processing large-scale data compared to commercial components 	High	<ul style="list-style-type: none"> Provides proprietary pivot components but with minimal functions 	Low	<ul style="list-style-type: none"> Providing proprietary pivot components Dedicated editor not available Inability to load large amounts of data (due to memory issues) 	Ave.
Technological Assistance and Training	<ul style="list-style-type: none"> Separate Helpdesk operation (24/7) and rapid technical support response (dedicated technical support team of over 40 members) Separate team of 60 personnel for research and development of products and testing Regular training conducted in Seoul and Busan 	High	<ul style="list-style-type: none"> Customer support center operation (weekdays only) Technical support provided by a team of 51, including 20 research institute employees Training available upon confirmation by designated personnel through email application (participants need to bring their own laptops) 	Low	<ul style="list-style-type: none"> Customer support center operation (weekdays only) Real-time responses not available on the technical support site Regular training conducted (participants need to bring their own laptops) Technical support operated primarily through outsourcing 	Low



Technology Competitiveness Analysis (Overseas)

Category	NEXACRO N	Kendo UI	ExtJS
Manufacturer	<ul style="list-style-type: none"> TOBESOFT (Country: Korea) 	<ul style="list-style-type: none"> Telerik (Country: Bulgaria) 	<ul style="list-style-type: none"> Sencha (Country: US/ IDERA acquired in 2017)
Outline	<ul style="list-style-type: none"> Javascript UI F/W UI Supports both Web and App. (Supports both Desktop and Mobile) 	<ul style="list-style-type: none"> Javascript UI F/W UI 	<ul style="list-style-type: none"> Javascript UI F/W UI
Components	<ul style="list-style-type: none"> Web Ver. (Javascript F/W based) App. Ver. (Proprietary Jender & V8 based) 	<ul style="list-style-type: none"> Web Ver. (Javascript F/W based) 	<ul style="list-style-type: none"> Ext Core (DOM search and control) Ext JS (Works as the UI)
Application	<ul style="list-style-type: none"> Desktop (Web & App.) Mobile (Web & App.) 	<ul style="list-style-type: none"> Desktop (Web) Mobile (Using Web, Hybrid - PhoneGap) 	<ul style="list-style-type: none"> Desktop (Web) Mobile (Web, Hybrid)
Development Method	<ul style="list-style-type: none"> Dedicated development tool Nexacro Studio using the WYSIWYG method Shared usage between developers and designers (publishers) UI supported with XML, logic with Javascript, and CSS 	<ul style="list-style-type: none"> Development in HTML and Javascript through the Editor tool Relatively low productivity 	<ul style="list-style-type: none"> Provides Sencha Architect in Drag & Drop format Offers IDE Plugins (Eclipse, Visual Studio, JetBrains) Offers Theme Editor
Technology Assistance	<ul style="list-style-type: none"> CS Center (1588-7895) operational 365 days a year Provides online support board for Q&A, samples Ensures smooth offline technical support compared to imported products 	<ul style="list-style-type: none"> CS center (telerik - English) Provides online CS support through Q&A and providing sample (English) 	<ul style="list-style-type: none"> Online CS center (English only)
Keypoints (Procs and Cons)	<ul style="list-style-type: none"> Supports Cross-Platform development using the same development tool (Web & App, Desktop & Mobile support) Development through dedicated tool using the WYSIWYG method Supports Web and App through OSMU 	<ul style="list-style-type: none"> Commercial Javascript F/W Provides about 70 UI components Only provides web based technological support App version not supported 	<ul style="list-style-type: none"> Provides about 140 UI components Functions limited depending on the license type Only provides web based technological support App version not supported

